

## HAIR SERVICES

Looking for inspiration, motivation or even a complete transformation? Call us to reserve a complimentary consultation.

Our philosophy is customized creativity. Our innovative team of stylists will create a look that caters for you and your lifestyle.

After a thorough consultation, enjoy a Sensory Journey using natural essential oils and a stress-relieving head and shoulder massage before your service.

	Principal Stylist
Womens Style cut (with b'dry)	78
Youth to Year 12	78
Mens Style Cut	45
Clipper Cut	30
Beard	15
Fringe Trim	10
Blow Dry Short	45
Blow Dry Medium	55
Blow Dry Long	65
Straightening Irons	extra 10
Curls	extra 20
Hair up	from 75
Perms	P.O.A

## HAIR TREATMENTS

An Ideal treatment to cleanse your hair from environmental pollutants. Your head is an ecosystem. Hair and scalp working in harmony, sharing energy and nutrients to create the right environment for healthy hair. Like the Earth's environment, it must be in balance and cared for. When out of balance, it must be brought back to health.

### BOTANICAL HAIR AND SCALP THERAPY

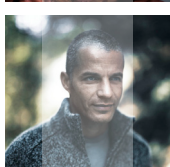
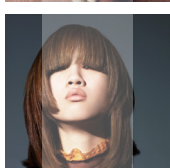
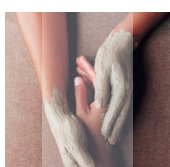
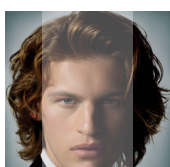
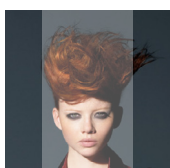
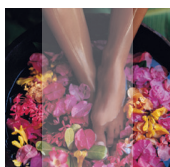
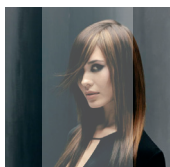
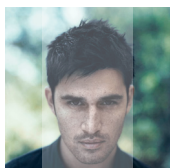
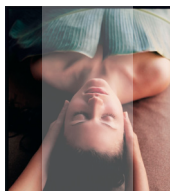
Strength or Moisture Infusion	10 mins	20
Elixir Remedy for Hair	20 mins	30
Hair and Scalp Renewal	30 mins	40

Take advantage of these rejuvenating add-on treatments with your cut, colour or blow dry service.

## COLOUR SERVICES

Aveda Full Spectrum hair colour immerses hair in 97% naturally-derived formulas for our permanent colour and 99% naturally-derived formulas for our deposit-only semi-permanent colour.

Drenching each strand in sunflower, castor and jojoba oils to maintain the condition of hair and deliver exceptional shine, our patented green tea technology helps ensure the most true-to-life tones.



All prices can be quoted before commencement of the service or following your complimentary consultation. Over the phone quotes are only rough estimate and should be used as a guide only.

### HIGHLIGHTS

	Short	Medium	Long
T-Section	60	70	80
1/2 Head	80	100	120
Full Head	120	140	160

### PERMANENT/SEMI GLOSS

	Roots	Short	Medium	Long
	80	-	-	-
Roots to Ends	-	90	100	110
Toner	-	30	40	50

### COLOUR CORRECTION

Pricing will vary according to consultation.

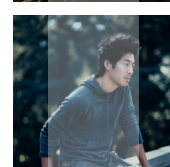
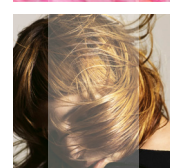
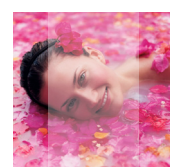
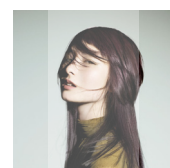
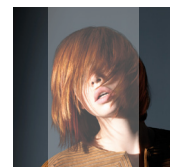
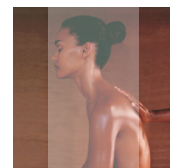
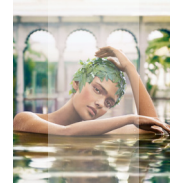
We recommend you book a blow-dry with a stylist or assistant following your hair colour.

## HANDS AND FEET

Deluxe Manicure	60 mins	80
<i>Includes Caribbean Therapy hand treatment</i>		
Express Spa Pedicure	45 mins	70
<i>Foot spa with massage or cuticles shaping &amp; buffing</i>		
Deluxe Spa Pedicure	60 mins	80
<i>Foot spa, salt exfoliation, massage, cuticles, shaping, buffing and painting</i>		
Foot Treatment	allow 60 mins	80
<i>Includes foot wash and cleanse, oil infusion, exfoliation and massage</i>		
Foot Massage with Reflexology	allow 60 mins	80
<i>Includes foot wash and cleanse, massage with reflexology points</i>		

## BODY

Salt Glow Body Exfoliation	allow 2 1/2 hours	235
<i>Nourishing body exfoliation, hydro massage, relaxing rehydration body massage, and finish with a shampoo &amp; blow dry</i>		



## FACIALS

Elemental Nature Facial	approx 90 mins	129
<i>Skin rejuvenate and total relaxation</i>		
Enbrightenment	60 mins	120
<i>Illuminates your skin with improving clarity, dark spots and discolouration</i>		
Green Science	60 mins	120
<i>Clinically proven to perform in 4 weeks</i>		
<i>Less visible lines and wrinkles</i>		
Outer Peace Blemish Relief Facial	60mins	120
<i>A facial process to help prevent blemishes and redness and balance skin condition</i>		
Tourmaline Facial	60 mins	120
<i>Boost skin renewal &amp; increase smoothness</i>		
Perfecting Plant Peel	3 treatments	150
<i>Provides instant exfoliation and radiance benefit</i>		

## MASSAGE

Back, Neck & Shoulders	allow 35 mins	65
<i>Relieves tension and improves circulation</i>		
Legs, Back & Shoulders	allow 45 mins	75
<i>Relieves tension and improves circulation</i>		
Full Body Massage	allow 70 mins	95
<i>Relieves tension and improves circulation</i>		
Total Body Massage	allow 90 mins	120
<i>Includes Hands, Feet, Stomach</i>		
Zen Shiatsu Massage	approx 90 mins	120
<i>Yin and Yang balancing techniques, acupuncture</i>		
Fusion Stone Massage	90 mins	120
<i>Using a combination of traditional massage movements combined with heated stones</i>		
Indian Head Massage	45 mins	65
<i>Seated massage, including upper back, neck and shoulder massage, scalp &amp; head</i>		
Healing Touch Energy Session	45 mins	65
<i>Balancing energy field therapy</i>		
Chakra Balancing Massage	90 mins	120
<i>Interactive massage focusing on Chakra energy centres</i>		
Face Neck & Shoulder Massage	35 mins	75
<i>Relaxing face, scalp, neck and shoulder massage</i>		

## ADDITIONAL SERVICES

<i>Available with other treatments</i>		
Spa Pedi with Colour Service	35 mins	55
<i>While you colour processes enjoy a foot spa and massage</i>		
Hydrotherapy Massage	allow 45 mins	60
<i>Water and air massage</i>		
Eye Zone Wrap	30 mins	55